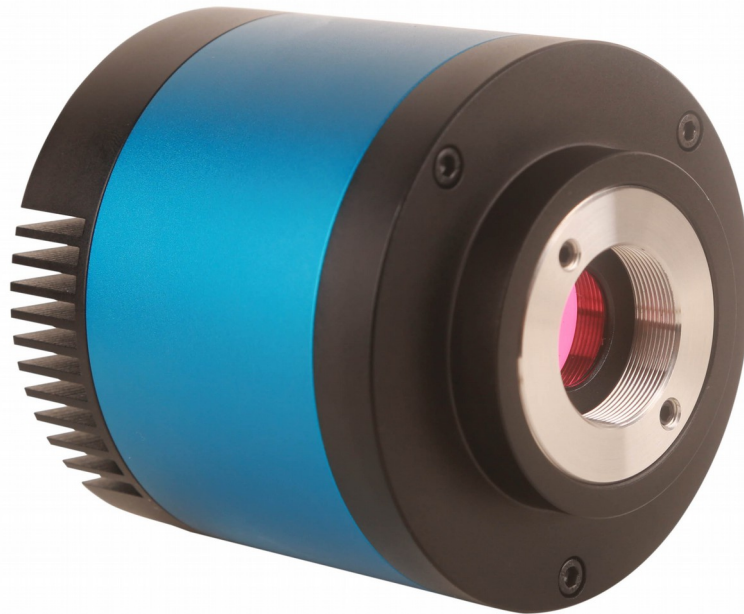


**CAMERA DIGITALE 16.0MP  
CMOS TPE16000HCL  
COOLED  
CON  
SENSORE 4/3"  
PANASONIC MN34230**



## **CARATTERISTICHE**

- ALTA SENSIBILITA' BASSO RUMORE
- CMOS B/N-COLORE 4/3" PANASONIC MN34230
- SCANSIONE PROGRESSIVA
- CONVERTITORE A/D DA 12-BIT PARALLELO
- RISOLUZIONE 4648x3505 – 2304x1750 1536x1168
- BINNING 1x1 – 2x2 - 3x3
- VELOCITA' 6, 15 e 30 fps
- FAN COOLING SYSTEM
- ATTACCO PASSO "C"
- ESPOSIZIONE 0.06ms - 1000s
- BILANCIAMENTO BIANCO auto/man.
- AUTO ESPOSIZIONE auto/man.
- USB 3.0 ALTA VELOCITA'
- CORPO IN ALLUMINIO ANODIZZATO
- DIMENSIONI D80 X 75 mm

## CMOS TPE1600HCL

### SPECIFICHE

Model	TPE1600HCL Color CMOS 16.0 MPixels Cooled	TPE1600BHCL Mono CMOS 16.0 MPixels Cooled
Image Sensor	PANASONIC 4/3" MN34230PLJ(C) (17.6x13.3mm) COLORE	PANASONIC 4/3" MN34230ALJ(M) (17.6x13.3mm) MONO
Scan Mode	Progressive	Progressive
Pixel Size	3.8µm x 3.8µm	3.8µm x 3.8µm
Color Rendering Technique	Ultra Fine™ Color Engine	
A/D Converter	12-bit Parallel, 8-bit R.G.B to PC	12-bit Parallel, 8-bit R.G.B to PC
Dark Signal	2413LSB 89.1LSB (Gain= 0dB)	2650LSB 89.1LSB (Gain= 0dB)
Max Resolution (Hardware)	4648x3506 (Approx. 16.0Mp Pixels)	4648x3506 (Approx. 16.0Mp Pixels)
Binning	1x1 – 2x2 - 3x3	1x1 – 2x2 - 3x3
Speed (Depends on the PC)	30fps @1536x1168	30fps @1536x1168
Wave Length(nm)	380-650nm (IR-Cut added)	380-650nm (IR-Cut added)
Exposure	0.06ms~1000s, ROI Auto & Manual	0.06ms~1000s, ROI Auto & Manual
White Balance	One Push ROI WB/Manual Temp.Tint Adj	
Auto-exposure	Automatic / Manual	Automatic / Manual
Digital Interface	USB3.0	USB3.0
Shutter Control	Electronic shutter	Electronic shutter
Cooling System	Fan cooling controllable	Fan cooling controllable
Programmable Control	Image size, brightness, gain, contrast, gamma, saturation, exposure time	Image size, brightness, gain, contrast, gamma, exposure time
Working Temperature	10°C ~ 50°C	10°C ~ 50°C
USB Cable	USB 3.0 cable, length 2.5m	USB 3.0 cable, length 2.5m
Power Supply	DC 5V over PC USB port for Camera	DC 5V over PC USB port for Camera
Camera Body	D80 x 75 mm	D80 x 75 mm

Tutti i dati sono soggetti a variazioni senza preavviso od obblighi da parte del produttore