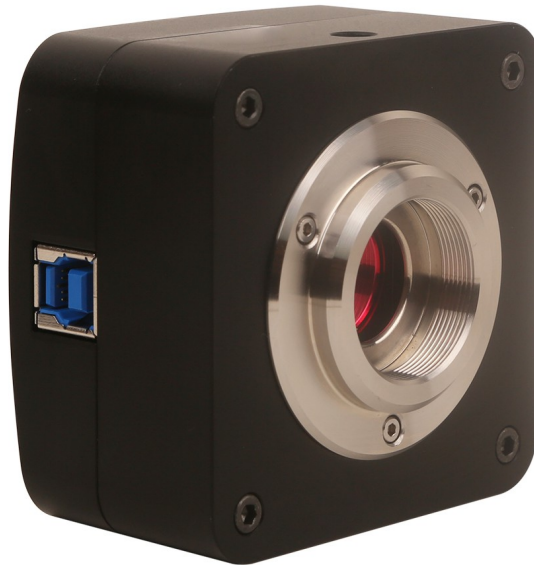


**CAMERA DIGITALE 20.0MP
CMOS TPS20000H
CON
SENSORE 1"
SONY IMX183**



**SENSORE SONY EXMOR DA 1"
CON
VIDEO SIGNAL PROCESSOR**

CARATTERISTICHE

- ALTA VELOCITA' DI ELABORAZIONE
- CMOS COLORE 1" SONY EXMOR IMX183
- VIDEO SIGNAL PROCESSOR
- SCANSIONE PROGRESSIVA
- CONVERTITORE A/D DA 12-BIT PARALLELO
- SENSIBILITA' 462mV 1/30sec
- RISOLUZIONE Max 5440x3648
- BINNING 1x1 – 2x2 - 3x3
- VELOCITA' 15, 50 e 60 fps
- ATTACCO PASSO "C"
- ESPOSIZIONE 0.1ms - 15s
- BILANCIAMENTO BIANCO auto/man.
- AUTO ESPOSIZIONE auto/man.
- USB 3.0 ALTA VELOCITA'
- CORPO IN ALLUMINIO ANODIZZATO
- DIMENSIONI 68 X 68 X 40 mm

CMOS TPS20000H

SPECIFICHE

Model	TPS20000H Color CMOS 20.0 MPixels
Image Sensor	SONY EXMOR 1" IMX183 (15.86 mm) Color
Image processing	Video Signal Processor
Scan Mode	Progressive
Pixel Size	2.4µm x 2.4µm
Color Rendering Technique	Ultra Fine™ Color Engine
A/D Converter	12-bit Parallel, 8-bit R.G.B to PC
G Sensitivity	462mV with 1/30s Accumulation
Resolution (Hardware)	5440x3648 2736x1824 1824x1216
Binning	1x1 2x2 3x3
Speed (Depends on the PC)	15, 50 e 60 fps
Wave Length(nm)	380-650nm (IR-Cut added)
Exposure	0.1ms~15s, ROI Auto & Manual
White Balance	One Push ROI WB/Manual Temp.Tint Adj
Auto-exposure	Automatic / Manual
Digital Interface	USB3.0
Shutter Control	Electronic shutter
Programmable Control	Image size, brightness, gain, contrast, gamma, saturation, exposure time
Working Temperature	10°C ~ 50°C
USB Cable	USB 3.0 cable, length 2.5m
Power Supply	DC 5V over PC USB port for Camera
Camera Body	68 x 68 x 40 mm

Tutti i dati sono soggetti a variazioni senza preavviso od obblighi da parte del produttore