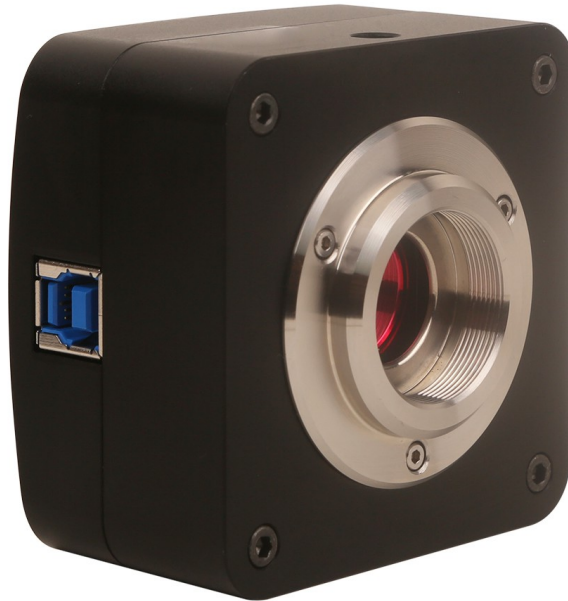


**CAMERA DIGITALE 14.0MP  
CMOS TP14000H  
CON  
SENSORE 1 /2.3"  
APTINA MT9F002**



**21fps a 2048x1644 pixel**

## **CARATTERISTICHE**

- CMOS COLORE 1/ 2.3" APTINA MT9F002
- SCANSIONE PROGRESSIVA
- CONVERTITORE A/D DA 12-BIT PARALLELO
- SENSIBILITA' 0.724V / lux-sec
- RISOLUZIONE MAX 4096X3288
- VELOCITA' 54, 21, 6.2 fps
- RANGE DINAMICO 65.3dB
- RAPPORTO S/N 35.5 dB
- ATTACCO PASSO "C"
- ESPOSIZIONE 0.4ms - 2000ms
- BILANCIAMENTO BIANCO auto/man.
- AUTO ESPOSIZIONE auto/man.
- USB 3.0 ALTA VELOCITA'
- CORPO IN ALLUMINIO ANODIZZATO
- DIMENSIONI 68X68X45 mm

## CMOS TP14000H

### SPECIFICHE

<b>Model</b>	<b>TP14000H</b>
Image Sensor	1/2.3" Aptina MT9F002 CMOS (Diagonal 7.672mm)
Scan Mode	Progressive
Pixel Size	1.4µmX 1.4µm
Color Rendering Technique	Ultra Fine Color Engine
A/D Converter	12-bit Parallel, 8-bit R.G.B to PC
G Sensitivity	0.724V/lux-sec
Max Resolution (Hardware)	4096 X 3288 (14MP)
Speed (Depends on the PC)	6.2fps @4096 x 3288, 21fps @2048 x 1644, 54fps @1024 x 822
Dynamic Range	65.3dB
SN Ratio	35.5dB
Wave Length(nm)	400-650nm (IR-Cut added)
Exposure	Normal: 0.4-2000 ms
White Balance	One Push ROI WB/Manual Temp.Tint Adj
Auto-exposure	Automatic / Manual
Image Output	USB3.0
Power Supply	USB3.0
Programmable Control	Image size, brightness, gain, contrast, gamma, saturation, exposure time
Working Temperature	-10°C ~ 60°C
USB Cable	USB cable, length 2.5m
Camera Body	Metal body painted in black square shape, 68X68X45 (mm)

Tutti i dati sono soggetti a variazioni senza preavviso od obblighi da parte del produttore