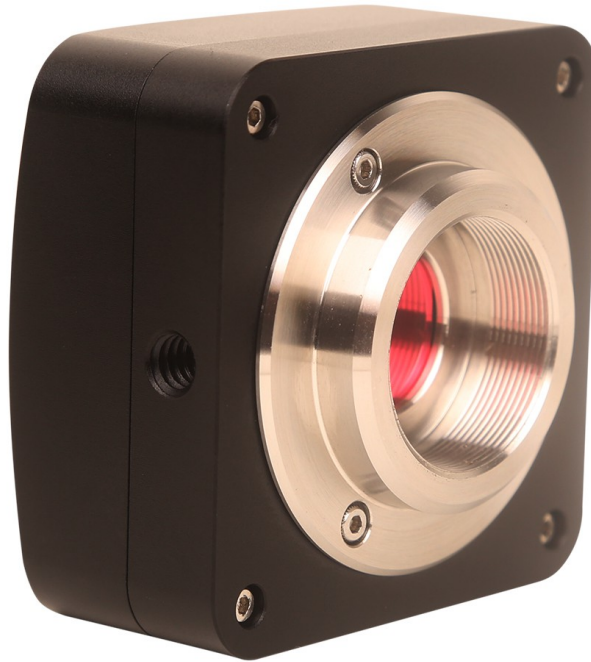


**CAMERA DIGITALE 8.0MP  
CMOS TP8000  
CON  
SENSORE 1 /2.5"  
APTINA SPECIAL**



**10fps a 1600x1200 pixel**

## **CARATTERISTICHE**

- CMOS COLORE 1/ 2.5" APTINA SPECIAL
- SCANSIONE PROGRESSIVA
- CONVERTITORE A/D DA 10-BIT PARALLELO
- SENSIBILITA' 0.31V / lux-sec
- RISOLUZIONE MAX 3264X2448
- VELOCITA' 30, 10, 3 fps
- RANGE DINAMICO 65.2dB
- RAPPORTO S/N 34 dB
- ATTACCO PASSO "C"
- ESPOSIZIONE 0.38ms - 2000ms
- BILANCIAMENTO BIANCO auto/man.
- AUTO ESPOSIZIONE auto/man.
- USB 2.0 ALTA VELOCITA'
- CORPO IN ALLUMINIO ANODIZZATO
- DIMENSIONI 58X58X32 mm

## CMOS TP8000

### SPECIFICHE

<b>Model</b>	<b>TP8000</b>
Image Sensor	1/2.5" Aptina CMOS (Diagonal 6.8mm)
Scan Mode	Progressive
Pixel Size	1.67µmX 1.67µm
Color Rendering Technique	Ultra Fine Color Engine
A/D Converter	12-bit Parallel, 8-bit R.G.B to PC
G Sensitivity	0.3V/lux-sec
Max Resolution (Hardware)	3264 X 2448
Speed (Depends on the PC)	3fps @3264 x 2448, 10fps @1600 x 1200, 30fps @800x600
Dynamic Range	65.2dB
SN Ratio	34dB
Wave Length(nm)	400-650nm (IR-Cut added)
Exposure	Normal: 0.38-2000 ms
White Balance	One Push ROI WB/Manual Temp.Tint Adj
Auto-exposure	Automatic / Manual
Image Output	USB2.0
Power Supply	USB2.0
Programmable Control	Image size, brightness, gain, contrast, gamma, saturation, exposure time
Working Temperature	-10°C ~ 60°C
USB Cable	USB cable, length 2.5m
Camera Body	Metal body painted in black square shape, 58x58x32 (mm)

Tutti i dati sono soggetti a variazioni senza preavviso od obblighi da parte del produttore