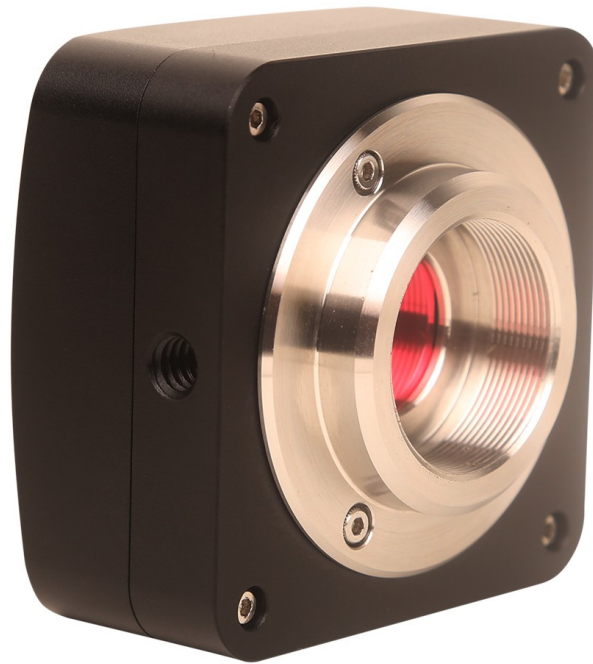


**CAMERA DIGITALE 5.1MP
CMOS TP5100
CON
SENSORE 1 /2.5"
APTINA MT9P001**



Range dinamico 66.5 dB

CARATTERISTICHE

- CMOS COLORE 1/ 2.5" APTINA MT9P001
- SCANSIONE PROGRESSIVA
- CONVERTITORE A/D DA 12-BIT PARALLELO
- SENSIBILITA' 0.53V / lux-sec
- RISOLUZIONE MAX 2592X1944
- VELOCITA' 60, 18, 5 fps
- RANGE DINAMICO 66.5dB
- RAPPORTO S/N 40.5 dB
- ATTACCO PASSO "C"
- ESPOSIZIONE 0.21ms - 2000ms
- BILANCIAMENTO BIANCO auto/man.
- AUTO ESPOSIZIONE auto/man.
- USB 2.0 ALTA VELOCITA'
- CORPO IN ALLUMINIO ANODIZZATO
- DIMENSIONI 58X58X32 mm

CMOS TP3100

SPECIFICHE

Model	TP5100CMOS 5.1 MPixels C-Mount
Image Sensor	1/2.5" Aptina CMOS (Diagonal 7.1mm)
Scan Mode	Progressive
Pixel Size	2.2µmX 2.2µm
Color Rendering Technique	Ultra Fine Color Engine
A/D Converter	12-bit Parallel, 8-bit R.G.B to PC
Responsitivity (@550nm)	0.53V/lux-sec
Max Resolution (Hardware)	2592 X 1944
Speed (Depends on the PC)	5fps @2592 x 1944, 18fps @1280 x 960, 60fps @640 x 480
Dynamic Range	66.5 dB
SN Ratio	40dB
Wave Length(nm)	400-650nm (IR-Cut added)
Exposure	Normal: 0.21-2000 ms
White Balance	One Push ROI WB/Manual Temp.Tint Adj
Auto-exposure	Automatic / Manual
Image Output	USB2.0
Power Supply	USB2.0
Programmable Control	Image size, brightness, gain, contrast, gamma, saturation, exposure time
Working Temperature	-10°C ~ 60°C
USB Cable	USB cable, length 2.5m
Camera Body	Metal body painted in black square shape, 58x58x32 (mm)

Tutti i dati sono soggetti a variazioni senza preavviso od obblighi da parte del produttore