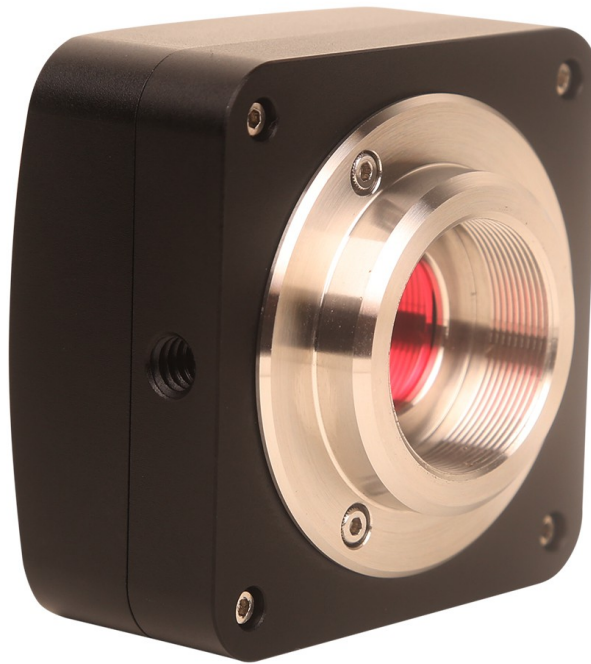


**CAMERA DIGITALE 3.1MP
CMOS TP3100
CON
SENSORE 1/2"
APTINA MT9T001**



28 fps a 1024x768 pixel

CARATTERISTICHE

- CMOS COLORE DA 1/2" APTINA MT9T001
- SCANSIONE PROGRESSIVA
- CONVERTITORE A/D DA 10-BIT PARALLELO
- SENSIBILITA' 1.0V lux-sec
- RISOLUZIONE 2048X1536
- VELOCITA' 43, 28, 8 fps
- RANGE DINAMICO 61dB
- RAPPORTO S/N 43 dB
- ATTACCO PASSO "C"
- ESPOSIZIONE 0.128ms - 2000ms
- BILANCIAMENTO BIANCO auto/man.
- AUTO ESPOSIZIONE auto/man.
- USB 2.0 ALTA VELOCITA'
- CORPO IN ALLUMINIO ANODIZZATO
- DIMENSIONI 58X58X32 mm

CMOS TP3100

SPECIFICHE

Model	TP3100CMOS 3.1 MPixels C-Mount
Image Sensor	1/2" Aptina CMOS (Diagonal 8.19mm)
Pixel Size	3.2µmX 3.2µm
Color Rendering Technique	Ultra Fine Color Engine
A/D Converter	10-bit Parallel, 8-bit R.G.B to PC
Responsitivity (@550nm)	1.0V/lux-sec
Max Resolution (Hardware)	2048 X 1536
Speed (Depends on the PC)	8fps @2048 x 1536, 28fps @1024 x 768, 43fps @680 x 510
Dynamic Range	61dB
SN Ratio	43dB
Wave Length(nm)	400-650nm (IR-Cut added)
Exposure	Normal: 0.128-2000 ms
White Balance	One Push ROI WB/Manual Temp.Tint Adj
Auto-exposure	Automatic / Manual
Image Output	USB2.0
Power Supply	USB2.0
Programmable Control	Image size, brightness, gain, contrast, gamma, saturation, exposure time
Working Temperature	-10°C ~ 60°C
USB Cable	USB cable, length 2.5m
Camera Body	Metal body painted in black square shape, 58 x 58 x 32 (mm)

Tutti i dati sono soggetti a variazioni senza preavviso od obblighi da parte del produttore