

X-Entry

X-Series entry level software for interactive measurements on live and still images in multidocument environment.

Image acquisition in multidocument environment with resolution up to 32.000x32.000 pixels, 32-bit color, with digital TP-Series videocameras.

Image acquisition with WDM-compatible (Windows Driver Model) videocameras with DirectX technology: measurements on the live image (overlay).

Interactive measurement functions: linear distance, angle and its complementary, radius and area of circle by 3 points, perimeter and area of a figure.

Editor on measurement functions for text color, format, background color, line thickness and style.

Insertion of marker and text.

Up to 20 calibration memories for as many objectives.

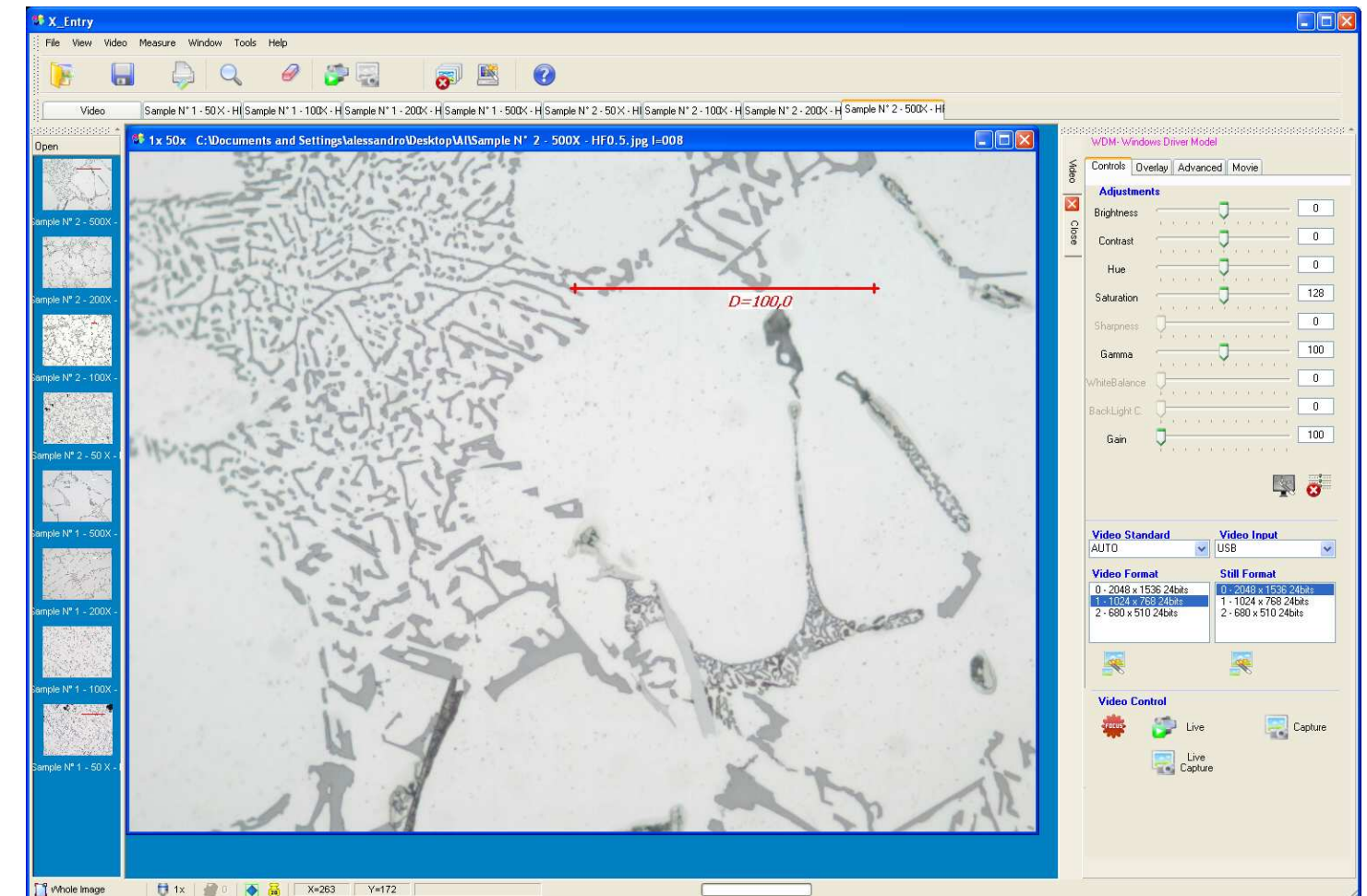
Autocalibration when the zoom factor or window size change.

Custom toolbars.

Importing and exporting of images in different graphic formats.

English and Italian guide online.

X-SERIES ENTRY LEVEL SOFTWARE FOR INTERACTIVE MEASUREMENTS ON LIVE AND STILL IMAGES IN MULTIDOCUMENT ENVIRONMENT



FEATURES

- INTERACTIVE MEASUREMENT FUNCTIONS: LINEAR DISTANCE, ANGLE, RADIUS AND AREA OF CIRCLE, PERIMETER AND AREA OF A FIGURE
- MEASUREMENTS ON LIVE AND STILL IMAGES
- DIRECTX CAMERA INTERFACE
- TP-SERIES DIGITAL CAMERAS UP TO 14 MEGAPIXEL RESOLUTION
- EXCELLENT IMAGE QUALITY
- FAST RESPONSE TIMES AND SHORT FOCUS TIMES
- PROGRAMMABLE GAIN AND EXPOSURE CONTROL
- PROGRAMMABLE WINDOW SIZE
- FOCUS INDICATOR ON LIVE IMAGE
- AUTOCALIBRATION
- MULTIDOCUMENT ENVIRONMENT
- ANNOTATIONS AND MARKERS
- METRIC SCALE

SW/HW Requirements

Operating System (x86 – x64): Windows 7, Vista, XP
VGA: 512 MByte RAM - DirectX9 compatible
Minimum Resolution: 1280x900 pixels, 32-bit color
CPU: Pentium IV 3.0 GHz
System RAM memory: 1 Gbyte DVD R/RW Reader
Hard Disk Space: 500MByte

The manufacturer reserves the right to make technical changes without prior notice.

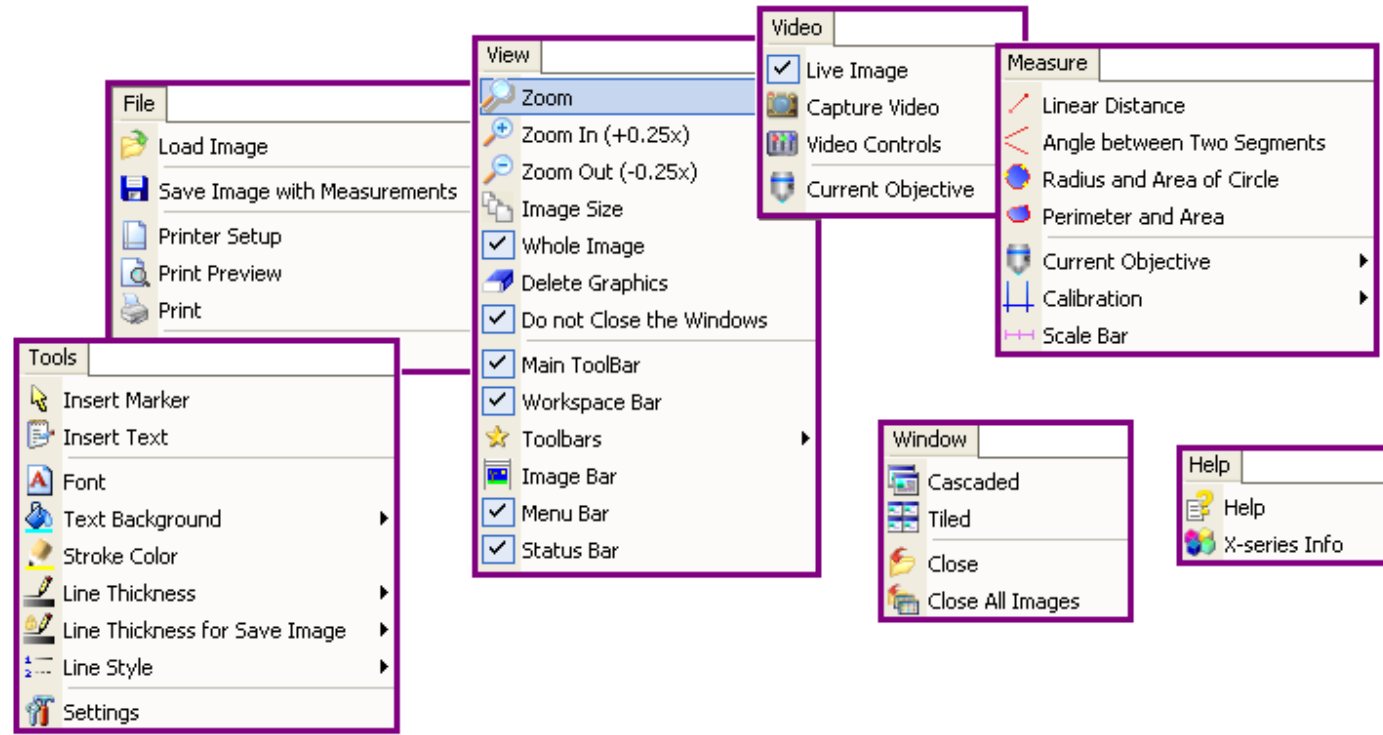
X-ENTRY

X-Series entry level software for interactive measurement on live and still images in multidocument environment.

X-Entry is a simple and powerful software package supplied with a TP-Series digital camera with resolution up to 14 Mega Pixel and 32-bit color.

Image acquisition uses WDM (Windows Driver Model) DirectX technology: measurements on still and live images (overlay).

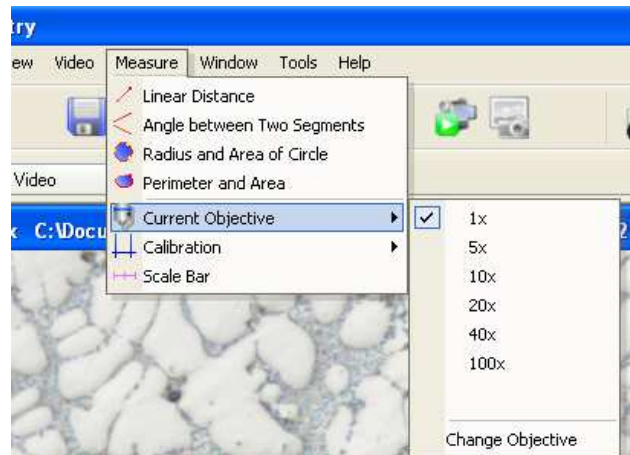
Menu



Multidocument Environment

The work environment is in multidocument mode. This means that it is possible to work with several images (even resized ones) at the same time.

All the menu functions are also available through the toolbars, which are entirely customizable.



Interactive Measurement Functions

The software has several measurement functions such as: linear distance, angle and its complementary, radius and area of circle, perimeter and area of a figure, with the possibility of inserting markers and text for comments directly into the image.

Furthermore, an automatic metric scale (which can be inserted into the images) is available.

The system can be calibrated according to every magnification factor with corresponding memorization (max. 20 objectives). The calibration is automatic on images with different resolution or zoom magnification.

Image Capture

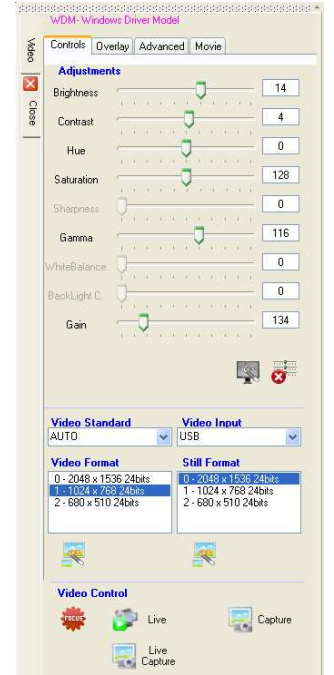
The live and still image format from the digital camera, the controls for brightness, contrast, saturation, hue, etc. can be defined by the user.

As well as on acquired images, all interactive measurement functions can be used on a live image without having to acquire the image first.

The calibration is automatic even when changing the resolution of the images.

There is also dynamic zoom function with auto-calibration of measurement functions.

The live image size can be user-programmable.



TP-SERIES DIGITAL CAMERAS

X-Entry can use one of the following cameras:



CCD CHIP

Model	TP1400CCD 1.4 MPixels	TP3100CCD 3.1 MPixels	TP5100 5.1 MPixels
Image Sensor	1/2" Sony CCD (Diagonal 8.0mm)	1/1.8" Sony CCD (Diagonal 8.9mm)	1/1.8" Sony CCD (Diagonal 9.0mm)
Scan Mode	Progressive	Interlaced	Interlaced
G Sensitivity	400mV with 1/30s Accumulation	455mV with 1/30s Accumulation	260mV with 1/30s Accumulation
Speed (Depends on the PC)	12fps @1360 x 1024	6fps @2048 x 1536, 41fps @640 x 480	4fps @2592 x 1944, 35fps @560 x 420
Dynamic Range	70dB	70 dB	70dB
SN Ratio	62dB	62dB	62dB
Wave Length(nm)	400-650nm (IR-Cut added)	400-650nm (IR-Cut added)	400-650nm (IR-Cut added)
White Balance	One Push ROI WB/Manual Temp.Tint Adj	One Push ROI WB/Manual Temp.Tint Adj	One Push ROI WB/Manual Temp.Tint Adj
Auto-exposure	Automatic / Manual	Automatic / Manual	Automatic / Manual
Image Output	USB2.0	USB2.0 High-speed	USB2.0 High-speed
Programmable Control	Image size, brightness, gain, contrast, gamma, saturation, exposure time	Image size, brightness, gain, contrast, gamma, saturation, exposure time	Image size, brightness, gain, contrast, gamma, saturation, exposure time
Working Temperature	-10°C ~ 60°C	-10°C ~ 60°C	-10°C ~ 60°C
USB Cable	USB cable, length 2.5m	USB cable, length 2.5m	USB cable, length 2.5m

CMOS CHIP

Model	TP3100CMOS 3.1 MPixels	TP5100CMOS 5.1 MPixels	TP8000CMOS 8.0 MPixels
Image Sensor	1/2" Aptinia CMOS (Diagonal 8.2mm)	1/2.5" Aptinia CMOS (Diagonal 7.1mm)	1/2.5" Aptinia CMOS (Diagonal 6.8mm)
Scan Mode	Progressive	Progressive	Progressive
Responsivity (@550nm)	1.0V/lux-sec	0.53V/lux-sec	0.3V/lux-sec
Speed (Depends on the PC)	8fps @2048 x 1536, 22fps @1024 x 768, 43fps @680 x 510	5fps @2592 x 1944, 18fps @1280 x 960, 60fps @640 x 480	1.9fps @3264 x 2448, 8fps @1600 x 1200, 27fps @800x600
Dynamic Range	61dB	66.5 dB	65.2dB
SN Ratio	43dB	40dB	34dB
Wave Length(nm)	400-650nm (IR-Cut added)	400-650nm (IR-Cut added)	400-650nm (IR-Cut added)
White Balance	One Push ROI WB/Manual Temp.Tint Adj	One Push ROI WB/Manual Temp.Tint Adj	One Push ROI WB/Manual Temp.Tint Adj
Auto-exposure	Automatic / Manual	Automatic / Manual	Automatic / Manual
Image Output	USB2.0	USB2.0	USB2.0
Programmable Control	Image size, brightness, gain, contrast, gamma, saturation, exposure time	Image size, brightness, gain, contrast, gamma, saturation, exposure time	Image size, brightness, gain, contrast, gamma, saturation, exposure time
Working Temperature	-10°C ~ 60°C	-10°C ~ 60°C	-10°C ~ 60°C
USB Cable	USB cable, length 2.5m	USB cable, length 2.5m	USB cable, length 2.5m